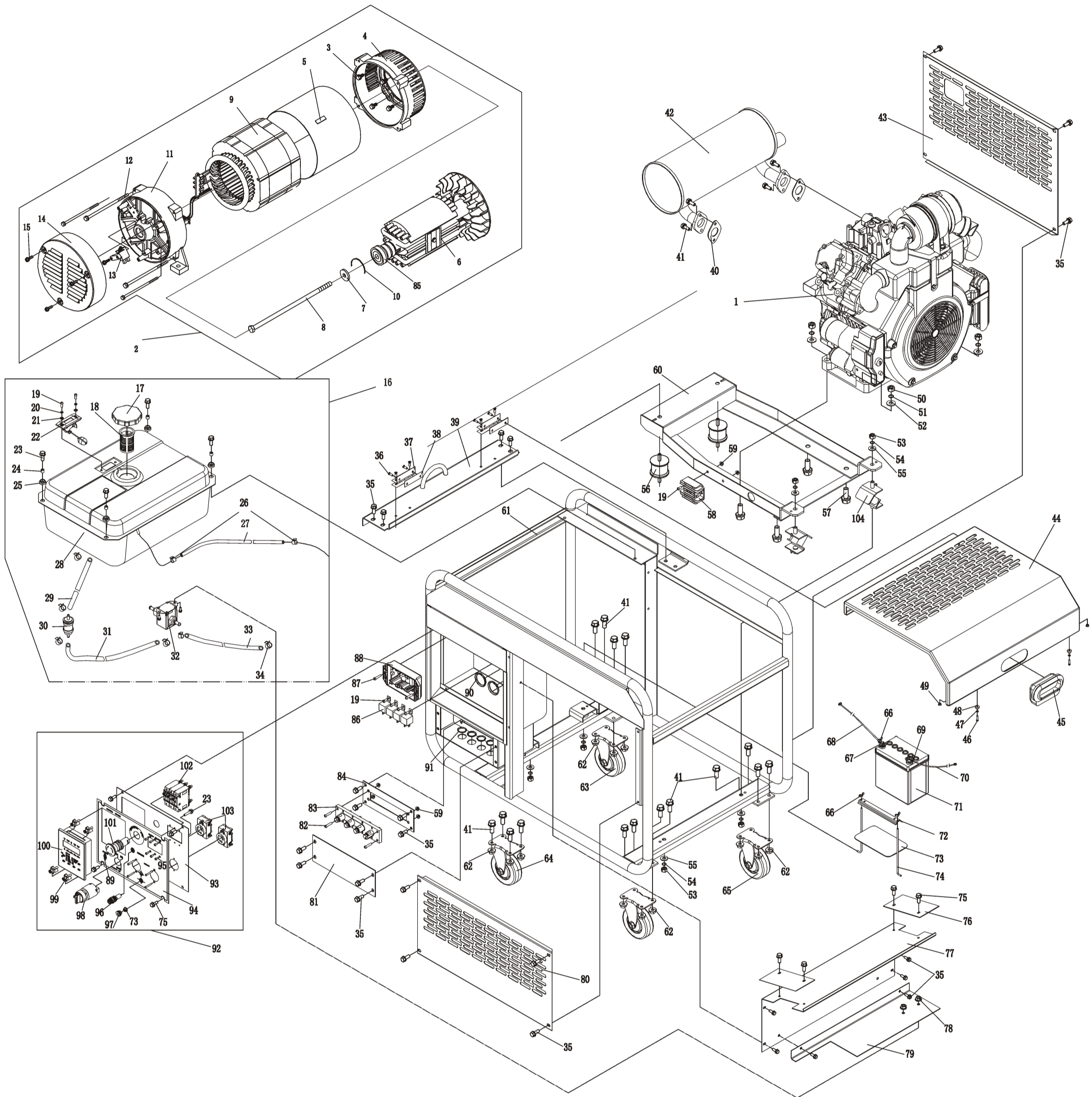


# ASSEMBLY AND PARTS ALBUM

## KDE12000EA3



No.	Part.No	Description	Qty.	No.	Part.No	Description	Qty.	No.	Part.No	Description	Qty.	No.	Part.No	Description	Qty.
1	KD2V86F	Engine assembly	1	27	KDE12000E-14003	Fuel returning pipe	1	53	GB/T41-2000	Nut M10	8	79	KDE12000E-03004	Air baffle 3	1
2	KTS12	Alternator assembly	1	28	KDE12E-14100	Fuel tank	1	54	GB/T93-1987	Spring washer 10	8	80	KDE12000E-03001	Protective plate 1	1
3	GB/T5789-2000	Bolt M8X25	4	29	KDE12000E-14001	Fuel supply pipe for fuel filter	1	55	GB/T97.1-2000	Flat washer 10	8	81	KDE8000E-03005	Cover board for output plate	1
4	KT245-00002	Front end cover	1	30	KGE12E-11010	Fuel filter	1	56	KDE8000T-12100	Shock absorber	2	82	GB/T818-2000	Screw M5X25	4
5	KF245-00004	Protective plate	1	31	KDE12000E-14004	Fuel inlet pipe for electrical fuel injection pump	1	57	GB/T5789-2000	Bolt M12X55	4	83	KDA12STA0-13300	Output plate	1
6	KT245-01000	Rotor assembly	1	32	KDE388-10500	Electrical fuel injection pump II	1	58	QDC-10	Charging regulator	1	84	KDE8000E-03004	Fixing board for output plate	1
7	KF245-00005	Through bolt washer	1	33	KDE12000E-14002	Fuel outlet pipe for electrical fuel injection pump	1	59	GB/T6177.1-2000	Nut M5	6	85	6206-ZNR	Bearing	1
8	KF245-00006	Through bolt	1	34	QC/T619-1999	Pipe clamp 13	8	60	KDE12000E-03200	Frame chassis	1	86	HFV4 12V 20A	Mini relay	4
9	KF245-02000	Stator assembly	1	35	GB/T5789-2000	Bolt M6X12	26	61	KDE12000E-03100	Frame	1	87	GB/T818-2000	Screw M5X40	2
10	6206DU	Snap ring	1	36	GB/T819.1-2000	Screw M5X12	8	62	GB/T6177.1-2000	Nut M8	166	88	KI-DAVR-95S3	AVR	1
11	KF245-00001	Rear end cover	1	37	KGE12E-08110	Hinge assembly	2	63	KGE12E-18300A	Swivel castor with brake	1	89	KP310-TIL	Communication port	1
12	KF245-00002	End cover bolt	4	38	KDE12EW-08001	Cushion block	4	64	KGE12E-18200A	Swivel castor	1	90	φ40	Protective sheath	2
13	KDE245-00100	Carbon brush	4	39	KDE12000E-08200	Support for top cover	1	65	KGE12E-18100A	Fixing castor	2	91	φ25	Protective sheath	4
14	KF245-00007	Alternator housing	1	40	KDE12000E-10001	Gasket	2	66	GB/62.1-2004	Wing nut M6	4	92	KDE12000EA230CH-13100	Control panel assembly - Honda	1
15	GB/T5783-2000	Bolt M5X30	4	41	GB/T5789-2000	Bolt M8X16	20	67	KDE5000T-09502	Battery positive wire clip	1	93	KDA8000EA0230CH-13110	Control panel-Honda	1
16	KDE12000E-14000	Fuel tank	1	42	KDE12000E-10100	Muffler	1	68	KDE5000T-09303	Battery positive wire(red)	1	94	KDE12000EA230CH-13121	PVC laminating	1
17	5GF-LDE-07200	Fuel tank cap	1	43	KDE12000E-03002	Protective plate 2	1	69	KDE5000T-09501	Battery negative wire clip	1	95	GB/T818-2000	Screw M4X10	6
18	KM168F-10004	Fuel filling strainer	1	44	KDE12000E-08101	Top cover plate	1	70	KDE5000T-09302	Grounding wire for battery(black)	1	96	BX201C	Fuse base	1
19	GB/T818-2000	Screw M5X12	6	45	KDE19T3-08001	Hand sleeve	1	71	12V 36Ah	Battery	1	97	KDE5000E-09005	Grounding nut	1
20	GB/T93-1987	Spring washer 5	2	46	GB/T818-2000	Screw M3X15	2	72	KDE5000T-03003	Battery pressing plate	1	98	JK427	Electrical starter	1
21	GB/T97.1-2002	Flat washer 5	2	47	GB/T97.1-2002	Flat washer 3	2	73	KDE5000T-03018	Battery cushion plate	1	99	KDE6700TA-13410	Controller location assembly	4
22	KGE12E-11200	Fuel indicator	1	48	KGE12E-08103	Shock absorber	2	74	KDE5000T-03002	Battery fastening pole	2	100	KP310 Controller	Intelligent controller	1
23	GB/T5789-1986	Bolt M6X25	5	49	GB/T6177.1-2000	Nut M3	2	75	GB/T5789-2000	Bolt M5X12	8	101	CE4T-10R-11	Emergency stop button	1
24	KDE5000X-03004	Bush	4	50	GB/T41-2000	Nut M12	4	76	KDE12E-03003	Air baffle 1	2	102	RSB1-30 3P 14.5A	Breaker	1
25	KDE5000X-03003	Shock absorber	4	51	GB/T93-1987	Spring washer 12	4	77	KDE12000E-03010	Air baffle 2	1	103	AC250V 30A	European receptacle	1
26	KM168F-10013	Clamp for fuel returning pipe	2	52	GB/T97.1-2000	Flat washer 12	4	78	GB/T6177.1-2000	Nut M6	8	104	6GF	Shock absorber	2